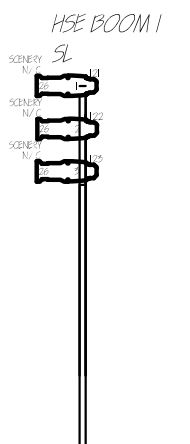
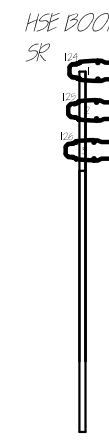
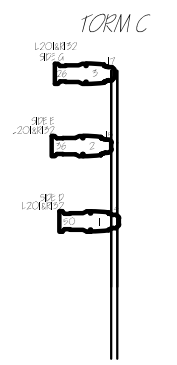
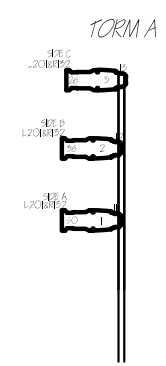


TORMS
TORMS START AT THE
BOTTOM OF THE
MESANINE LEVEL AND
GO UP TO EH CATWALKS.

Triad Stage Lighting Grid
TRIAD STAGE 2012



LIGHT PLOT INVENTORY:

2	6	16
7	7	4
1	2	10
6	13	9
6	14	1
2	?	2

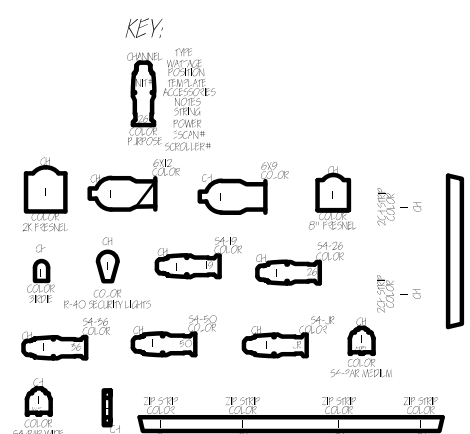
BOOM 3 SR



BOOM 4 SR



NOTES: 4' ZIP STRIPS STARTING 2' FROM
THE FLOOR.
THE PIPE SHOULD GO FROM THE FLOOR
AND TIE TO THE WOLF PIPE.



NOTES:
THE TOP LIGHT ON THE TORMENTORS
MUST BE HUNG AS HIGH AS POSSIBLE,
ALL OF THE LIGHTS ON THE TORMS WITH
SIDE ARMS AND TWO FEEL BELOW EACH
OTHER.

NOTES: HOUSE BOOMS
7'3" CLEARANCE TO FLOOR
UP AGAINST AUDIENCE RISERS
TIE TO HOUSE
ALL INSTRUMENTS HAVE SIDE ARMS

THE ILLUSION

LIGHT PLOT

TRIAD STAGE

DESIGNED BY: JOHN WOLF

DRAFTED BY: KAITLIN GILL

1"=0'-3/16"

5/23/2012