

SYMBOLS

- Source-4 70° 750w
- Source-4 50° 750w
- Source-4 36° 750w
- Source-4 26° 750w
- Source-4 19° 750w
- Source-4 14° 750w
- Source-4 10° 750w
- Source-4 50° 750w SEACHANGER
- Source-4 36° 750w SEACHANGER
- Source-4 26° 750w SEACHANGER
- Source-4 19° 750w SEACHANGER
- PAR64 WFL 1000w
- PAR64 MFL 1000w
- PAR64 NSP 1000w
- PAR64 VNSP 1000w
- VL 500
- HES Studio Spot 250
- Allman Spectra-Cyc
- RUNT MINI FAR CYC
- PRACTICAL
- 16-Frame Color Scroller

KEY

- Iris
- Color
- Template
- Channel
- Unit #
- Strobe Cap

NOTES

- ALL UNITS ON 18" CENTERS UNLESS OTHERWISE NOTED.
- REGARD NOTES AT POSITION TITLES.
- PLEASE STIFFEN ALL PIPES AGAINST ROTATION.
- ALL BOOM UNITS ARE ON SIDARMS.
- ALL ELECTRIC TRIMS ARE MEASURED FROM STAGE FLOOR TO CENTER OF ELECTRIC PIPE
- ALL BOOM HEIGHTS MEASURED FROM STAGE FLOOR TO SIDE ARM.
- PLEASE DROP ALL COLOR AND TEMPLATES PRIOR TO FOCUS.
- PLEASE HAVE R132, R119 AND BLACKWRAP AVAILABLE AT FOCUS.
- PLEASE HAVE TOP HATS AND BARN DOORS AVAILABLE AT FOCUS
- PLEASE PROVIDE SPARE CIRCUITS AT ALL POSITIONS.
- EXACT PLACEMENT OF ALL FLOOR MOUNTED UNITS TO BE DETERMINED BY LIGHTING DESIGNER
- PLEASE PATCH ALL SCROLLERS AND SEACHANGERS AS FIXTURE ATTRIBUTES

REVISED : 1/25

ROMEO AND JULIET

TAYLOR BUILDING THEATER
UNC GREENSBORO, NC

LIGHTING PLOT

Director: JOHN GULLEY
Lighting: KAITLIN GILL
Scenery: MICHAEL GURDO

M.E.: Daniel Perez

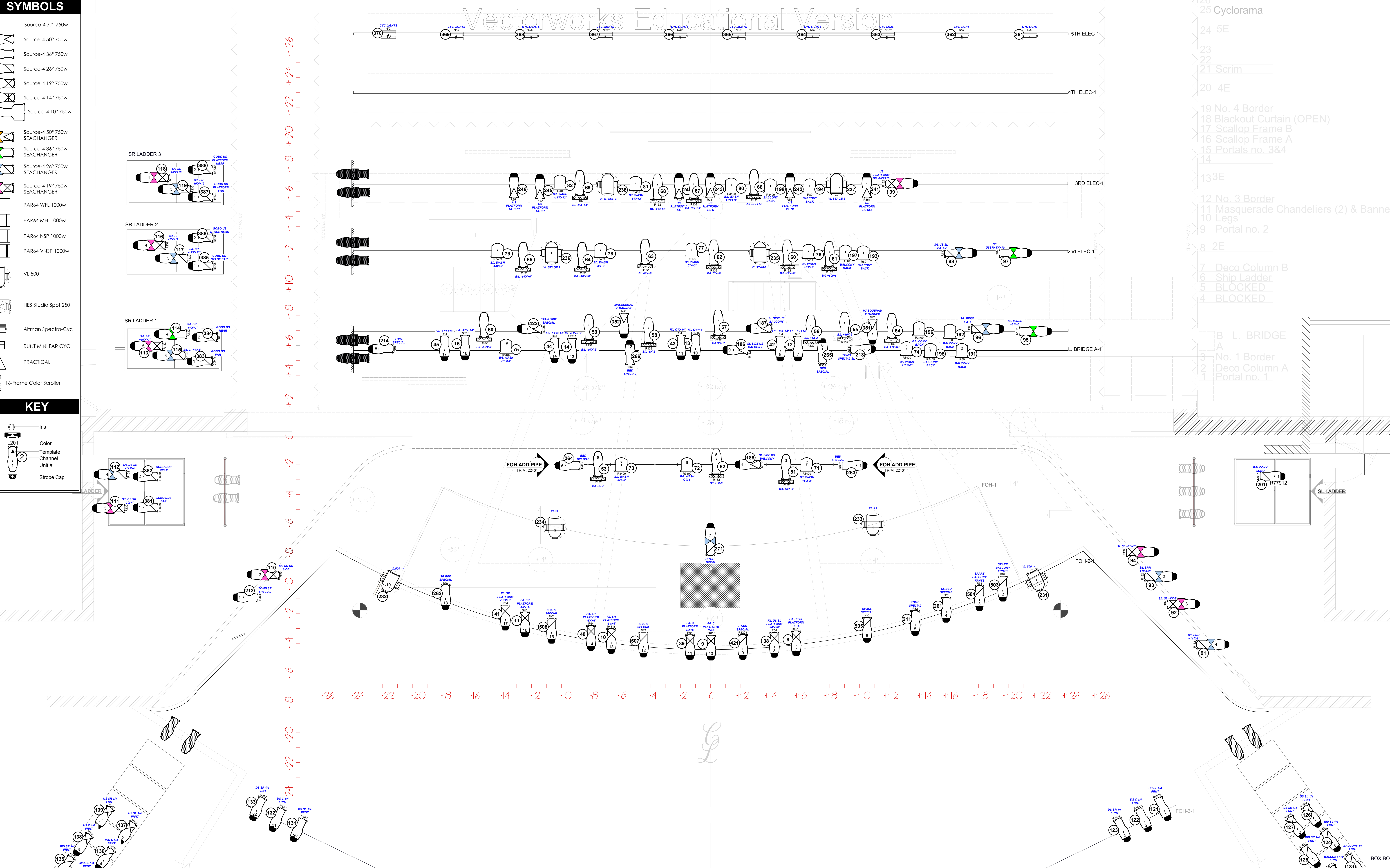
Rev: 1-25-2013

Plate #

1
of 4

KAITLIN GILL
Lighting Designer for Live Performance
919-595-5443-mobile
gill.kaitlin@gmail.com

Scale: 1/2" = 1'0"



- 26 Cyclorama
- 24 5E
- 23
- 22
- 21 Scrim
- 20 4E
- 19 No. 4 Border
- 18 Blackout Curtain (OPEN)
- 17 Scallop Frame B
- 16 Scallop Frame A
- 15 Portals no. 3&4
- 14
- 133E
- 12 No. 3 Border
- 11 Masquerade Chandeliers (2) & Banner
- 10 Legs
- 9 Portal no. 2
- 8 2E
- 7 Deco Column B
- 6 Ship Ladder
- 5 BLOCKED
- 4 BLOCKED
- B L. BRIDGE A
- 3 No. 1 Border
- 2 Deco Column A
- 1 Portal no. 1